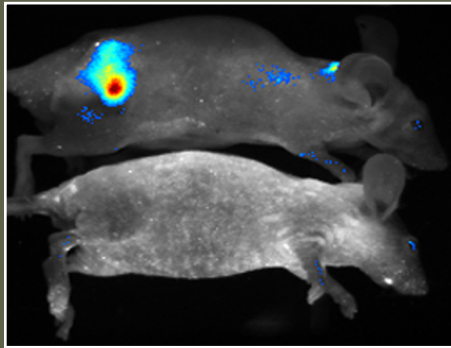


CRi

MAESTRO

IN-VIVO
IMAGING SYSTEM

Maestro 2



Introducing the Maestro 2, the first fully automated version of the award-winning Maestro small animal imaging system, including incorporating automated zoom and filter controls and the new FLEX™ liquid crystal tunable filter design. The Maestro 2 is the perfect optical imaging system for both core imaging facilities and laboratories. Maestro 2 combines the high sensitivity of the Maestro imaging system with advanced animal handling features and user-friendly, quantitative software.



The new Maestro 2:

- ✓ Set it up,
 - ✓ turn it on,
- and quantitative spectral data is at your fingertips immediately.

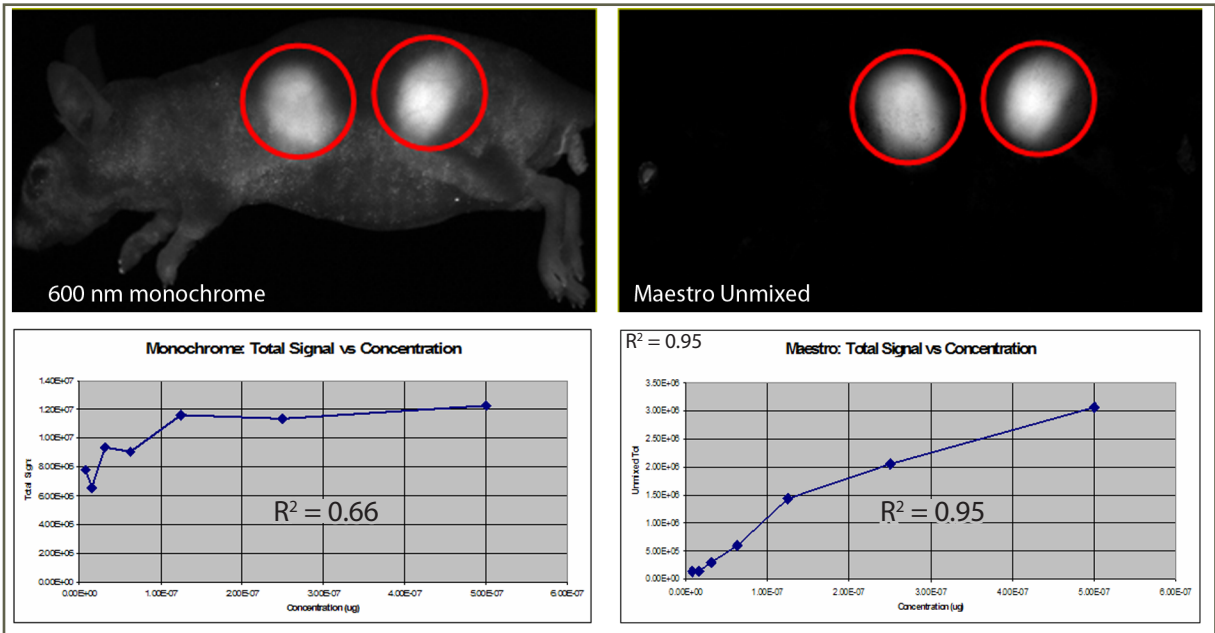
Cambridge Research & Instrumentation, Inc.
35 B Cabot Road Woburn, MA 01801 (P) 781.935.9099 (F) 781.935.3388
Toll Free: 1.800.383.7924 www.cri-inc.com

Quantitative Accuracy

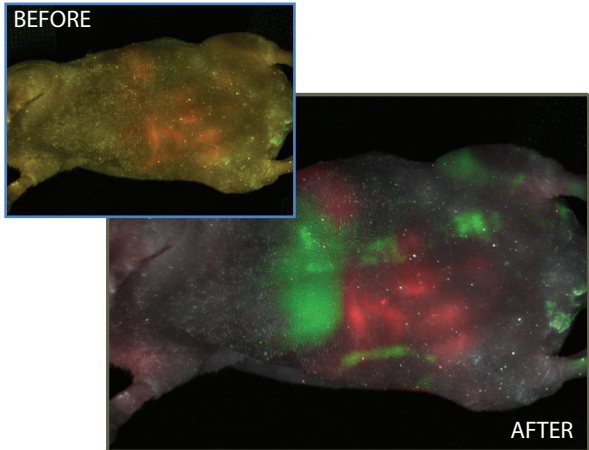
- Fully automated system allows easy, repeatable instrument setup for faster, more accurate experiments.
- Incorporates advanced animal handling features, heated and stage and chamber
- System calibration allows for improved quantitation across a broader range of experiments.
- Intuitive, user-friendly software allows for fast spectral unmixing of multiple signals and improved quantitation.

Powered by FLEX technology

- Optimally cooled CCD gives increased sensitivity.
- Automatic removal of autofluorescence increases spectral contrast and dramatically improves quantitation.
- Electronic bandwidth control provides more accurate multiplexing and quantitation.



Contact us at 1-800-383-7924 or at www.cri-inc.com/maestro2 to learn more about **Maestro 2** or to schedule a demonstration of this breakthrough system.



Notice to Purchaser:

The CRI Maestro™ imaging system has many applications involving a variety of materials, such as probes, cell lines, animal specimens, etc. Certain of these applications and/or materials may require licensing under patents held by third parties. For example, a license from AntiCancer Incorporated, 7917 Ostrow St., San Diego, CA 92111 and/or Caliper Life Sciences, Inc., 68 Elm St., Hopkinton, MA 01748, may be required for certain applications and/or materials. CRI's sale or other transfer of the Maestro™ imaging system does not convey any right or license under such third party patents. It is suggested, therefore, that users of the Maestro™ imaging system consult with counsel to determine whether licensing of such third party patents is required.

